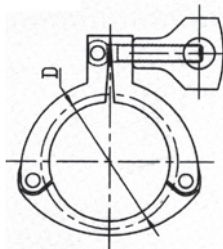




# 卫生级卡箍 Sanitary Clamp



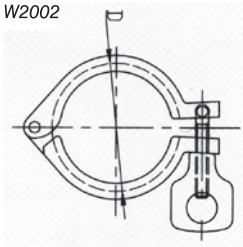
W2001



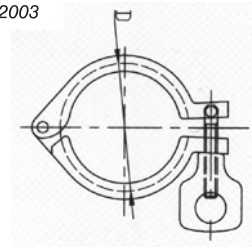
三片式卡箍 (13MHHM-3P)  
Three-Pcs Clamp (13MHHM-3P)

Size	D
1"-1 1/2"	53.9
2"	67.4
2 1/2"	80.9
3"	94.4
3.5"	109.2
4"	122.4
4.5"	133.2
6"	170.4

W2002



W2003



重型单销卡箍 (13MHH)  
Heavy duty clamp(13MHH)

Size	D
1/2"-3/4"	28
1"-1 1/2"	53.6
2"	67
2.5"	80.6
3"	94.2
3.5"	109.2
4"	122.2
4.5"	133.2
5"	149
133	159
6"	170.4
159	187
8"	220
219	238
10"	272
12"	323

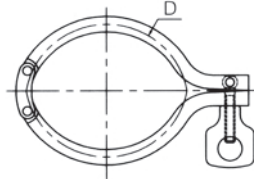
DIN 重型单销卡箍 (13MHH)  
DIN Heavy duty clamp(13MHH)

Size	D
DN10-20	37
DN25-40	53.6
DN50	67
DN65	94.2
DN80	109.2
DN100	122.2
DN125	149
DN125	159
DN150	170.4
DN150	187
DN200	220
DN200	238
DN250	272
DN300	323





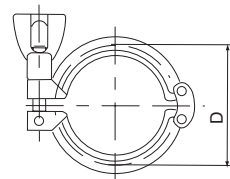
W2004



双销卡箍 (13MHHM-DP)  
Double pin clamp(13MHHM-DP)

Size	D
1/2"-3/4"	28
1"-1 1/2"	53.6
2"	67
2 1/2"	80.6
3"	94.2
3.5"	109.2
4"	122.2
4.5"	133.2
6"	170.4
8"	220
10"	272
12"	323

W2005

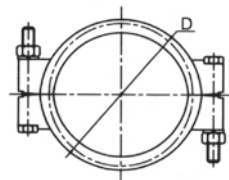


双销卡箍 (13SF)  
Double pin clamp (13SF)

SIZE	D
1/2"-3/4"	28
1"-1.5"	58.6
2.0"	72
2.5"	84
3.0"	98
4.0"	127

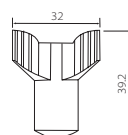


W2006

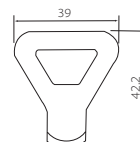


高压卡箍 (13MHP)  
High-pressure clamp (13MHP)

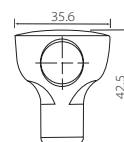
Size	D
1"-1 1/2"	53.6
2"	67
2 1/2"	80.6
3"	94.2
3.5"	109.2
4"	122.2
4.5"	133.2
6"	170.4



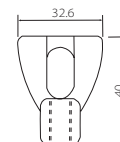
Nut-1



Nut-2



Nut-3



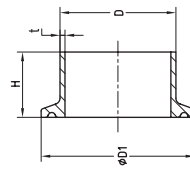
Nut-4



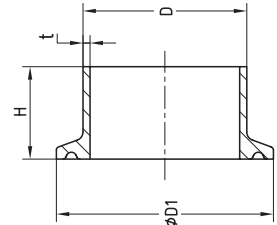
# 卫生级卡箍接头 Sanitary Ferrule



W2050



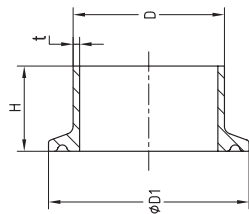
W2051



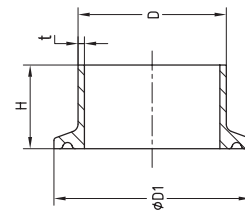
3A 卡箍接头  
3A Ferrule

Size	D	D1	H			t
			14WMP	14MMP	14AMP	
1/2"	12.7	25.4	12.7	21.5	28.6	1.65
3/4"	19.1	25.4	12.7	21.5	28.6	1.65
1"	25.4	50.5	12.7	21.5	28.6	1.65
1 1/2"	38.1	50.5	12.7	21.5	28.6	1.65
2"	50.8	64	12.7	21.5	28.6	1.65
2 1/2"	63.5	77.5	12.7	21.5	28.6	1.65
3"	76.2	91	12.7	21.5	28.6	1.65
4"	101.6	119	15.8	21.5	28.6	2.11
6"	152.4	167	22.2	21.5	38.1	2.80
8"	203.2	217.4	22.2	21.5	38.1	2.80
10"	254	268	22.2	21.5	38.1	3.50

W2052



W2053



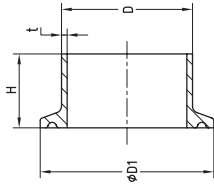
SMS 快装接头  
SMS Ferrule

Size	D	D1	H		t
			14WMP	14MMP	
19	19.1	25.4	12.7	21.0	1.5
25	25.4	50.5	12.7	21.0	1.5
32	31.8	50.5	12.7	21.0	1.5
38	38.1	50.5	12.7	21.0	1.5
51	50.8	64.0	12.7	21.0	1.5
63	63.5	77.5	12.7	21.0	2.0
76	76.2	91.0	12.7	21.0	2.0
89	88.9	106.0	12.7	21.0	2.0
102	101.6	119.0	15.8	21.0	2.0

DIN11850 系列 0&2 卡箍接头  
DIN11850 Series 0&2 Ferrule

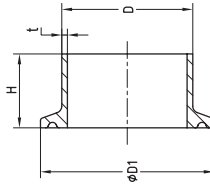
Size	D		D1	H	t	
	0	2			0	2
DN10	12	13	34	18	1.5	1.5
DN15	18	19	34	18	1.5	1.5
DN20	22	23	34	18	1.5	1.5
DN25	28	29	50.5	21.5	1.5	1.5
DN32	34	35	50.5	21.5	1.5	1.5
DN40	40	41	50.5	21.5	1.5	1.5
DN50	52	53	64	21.5	1.5	1.5
DN65	70	-	91	28	-	2
DN80	85	-	106	28	-	2
DN100	104	-	119	28	-	2
DN125	129	-	144.5	28	-	2
DN125	129	-	155	28	-	2
DN150	154	-	167	28	-	2
DN150	154	-	183	28	-	2
DN200	204	-	217.4	28	-	2
DN200	204	-	233.5	28	-	2
DN250	254	-	268	28	-	2
DN300	304	-	319	28	-	2

W2054

ISO IDF 卡箍接头  
ISO IDF Ferrule

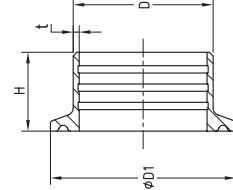
Size	D	D1	H	t
1/2"	12.7	25.4	21.5	1.5/1.0
3/4"	19.1	25.4	21.5	1.5/1.0
1"	25.4	50.5	21.5	1.5/1.2
1 1/4"	31.8	50.5	21.5	1.5/1.2
1 1/2"	38.1	50.5	21.5	1.5/1.2
45	45	64	21.5	1.5
2"	50.8	64	21.5	1.5
57	57	77.5	21.5	2.0
2 1/2"	63.5	77.5	21.5	2.0
3"	76.2	91	21.5	2.0
3 1/2"	89	106	21.5	2.0
4"	101.6	119	21.5	2.0
108	108	119/130	21.5	2.0
114.3	114.3	130	21.5	2.0
133	133	155	28	3.0
159	159	183	28	3.0
204	204	217.4	28	2.0
219	219	233.5	28	3.0
254	254	268	28	2.0
304	304	319	28	2.0

W2055

ISO1127 卡箍接头  
ISO1127 Ferrule

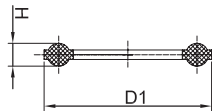
Size	D	D1	H	t
21.3	21.3	50.5	21.5	1.6
26.9	26.6	50.5	21.5	1.6
33.7	33.7	50.5	21.5	2.0
42.4	42.4	64	21.5	2.0
48.3	48.3	64	21.5	2.0
60.3	60.3	77.5	21.5	2.0
76.2	76.1	91	21.5	2.0
88.9	88.9	106	21.5	2.0
114.3	114.3	130	21.5	2.0
139.7	139.7	155	28.0	2.0
168.3	168.3	183	28.0	3.6
219.1	219.1	233.5	28.0	3.6

W2056

3A 扩展式快装接头  
3A Expansion joints of fast loading

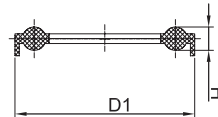
Size	D	D1	H
1"	29.5	50.5	19.1
1 1/2"	42.5	50.5	28.6
2"	55.7	64	33.3
2 1/2"	68.8	77.5	34.9
3"	82	91	36.5
4"	108	119	38.1

W2057

INCH 卡箍密封圈  
INCH Ferrule sealing

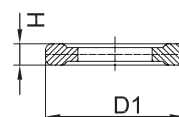
Size	D1	H
1"	50.5	5
1 1/2"	50.5	5
2"	64	5.5
2 1/2"	77.5	5.5
3"	91	5.5
3 1/2"	106	5.5
4"	119	5.5
4 1/2"	130	5.5
5"	144.5	5.5
ø133	155	5.5
6"	167	5.5
ø159	183	5.5
8"	217.4	5.5
ø219	233.5	5.5
10"	268	5.5
12"	319	5.5

W2058

DIN 卡箍密封圈  
DIN Ferrule sealing

Size	D1	H
DN10	34	5
DN15	34	5
DN20	34	5
DN25	50.5	5
DN32	50.5	5
DN40	50.5	5
DN50	64	5.5
DN65	91	5.5
DN80	106	5.5
DN100	119	5.5
DN125	144.5	5.5
DN125	155	5.5
DN150	167	5.5
DN150	183	5.5
DN200	217.4	5.5
DN200	233.5	5.5
DN250	268	5.5
DN300	319	5.5

W2059

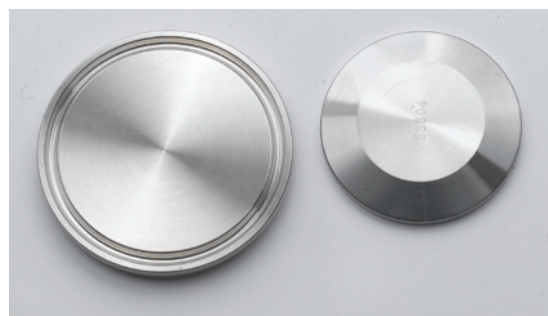
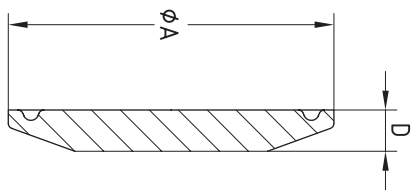
3A 卡箍垫圈  
3A Ferrule gasket

Size	D1	H
1/2"	20.3	5
3/4"	20.3	5





## 卡箍堵头 End Cap



### W2060

DIN 盲板  
DIN Blank

Size	A	D
DN15	34.0	5.0
DN20	34.0	5.0
DN25	50.5	6.3
DN32	50.5	6.3
DN40	50.5	6.3
DN50	64.0	6.3
DN65	91.0	6.3
DN80	106.0	7.9
DN100	119.0	7.9
DN125	144.5	10.5
DN125	155.0	10.5
DN150	167.0	10.5
DN150	183	10.5
DN200	217.4	11.1
DN200	233.5	11.1

### W2061

3A 盲板 -16AMP  
3A Blank-16AMP

Size	A	D
1/2"-3/4"	25.4	6.3
1"-1.5"	50.5	6.3
2"	64.0	6.3
2.5"	77.5	6.3
3"	91.0	6.3
4"	119.0	7.9
6"	166.8	11.1
8"	217.4	11.1
10"	268	11.1
12"	319	11.1

### W2062

SMS 盲板  
SMS Blank

Size	A	D
1/2"-3/4"	25.4	6.3
1"-1.5"	50.5	6.3
2"	64.0	6.3
2.5"	77.5	6.3
3"	91.0	6.3
4"	119.0	8.0
6"	166.8	11.0
8"	217.4	11.0
10"	268	11.0
12"	319	11.0